



Calypso F

Multifunctional
DR system

www.gmmspa.com





INNOVATION ABOVE ALL

Innovative DR system providing valuable diagnostic results in traumatology, Emergency, routine and specialized examinations.



ENGINEERED TO MEET ACTUAL NEEDS

Adjustable-height examination table with tabletop floating in the four directions: easy and fast patient positioning and maximum patient throughput.



The X-ray tube stand is equipped with state-of-the-art touch screen ensuring the complete management of the system.



Stitching function for the automatic reconstruction of the column and lower limbs images.

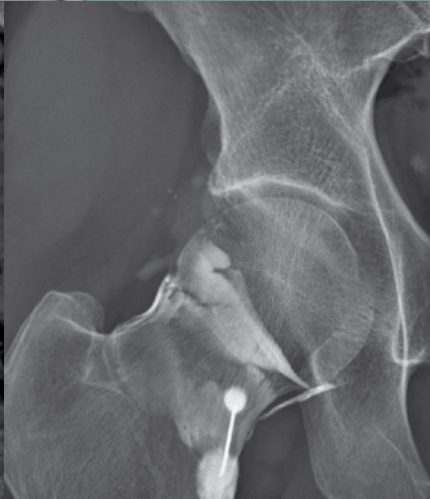
MAXIMUM OPERATIONAL RELIABILITY



An advanced technology provides the automatic alignment of the X-ray source with either detector (wall stand or examination table), so that the operator can easily execute AP projections and oblique incidences even varying the SID.



Calypso F is available in a variety of configurations providing for different generators and flat panel detectors: a system that actually meets the operator's needs.





Calypso Eng - 4210 - 0717 Data is subject to change without prior notice

GET IN TOUCH

GENERAL MEDICAL MERATE SPA
Via Partigiani, 25
24068 SERIATE (BG) - Italy

Phone +39 035 45 25 311
Fax +39 035 29 77 87
info@gmmspa.com

www.gmmspa.com

