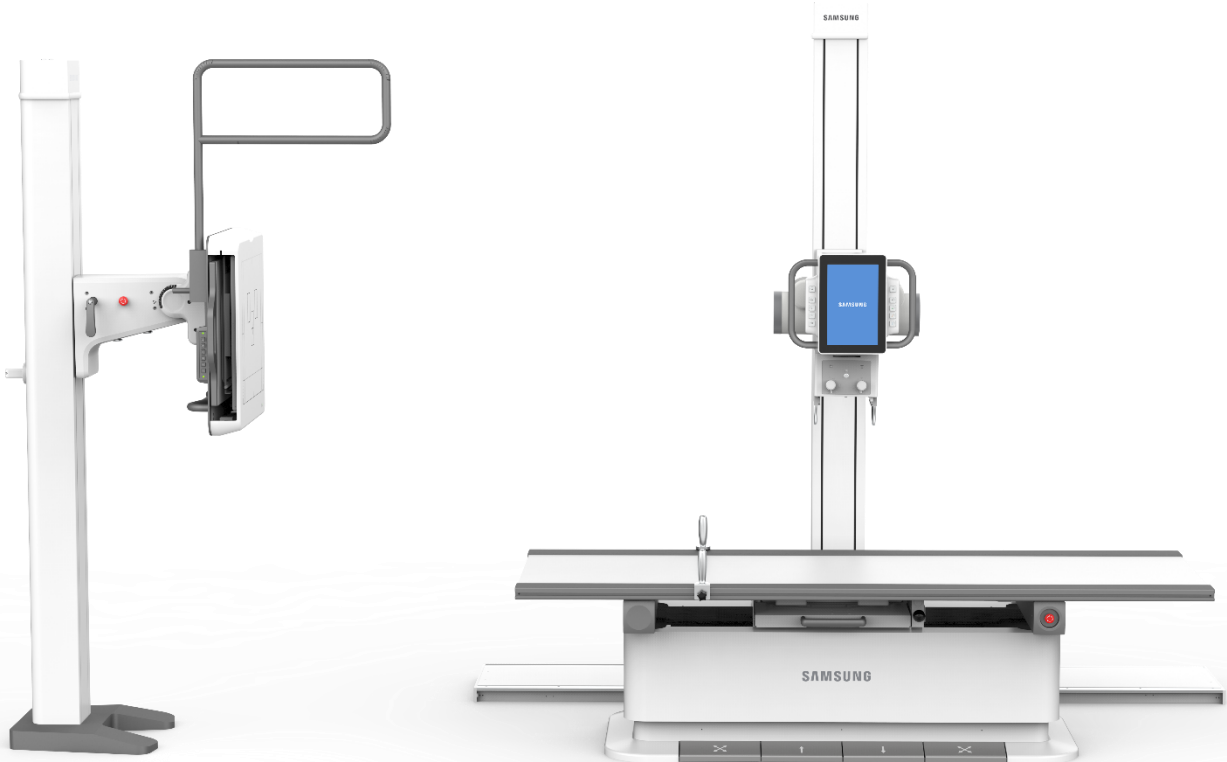


ACCELERATING PERFORMANCE



GF85



ACCELERATING PERFORMANCE



Introducing the new floor-mounted digital radiography system, AccE GF85, designed with work efficiency in mind. Featuring the same innovative core technology as Samsung's premium DR line-up, it offers outstanding ease of use, reliable performance and durability.

01

STREAMLINE
WITHOUT COMPROMISE

02

DIAGNOSTIC
CONFIDENCE

03

EXPAND
PREMIUM EXPERIENCE



AccE GC85A Vis



Th
I

GF85 is CE approval pending.



AcCE GM85



AcCE Glass-Free
Detector

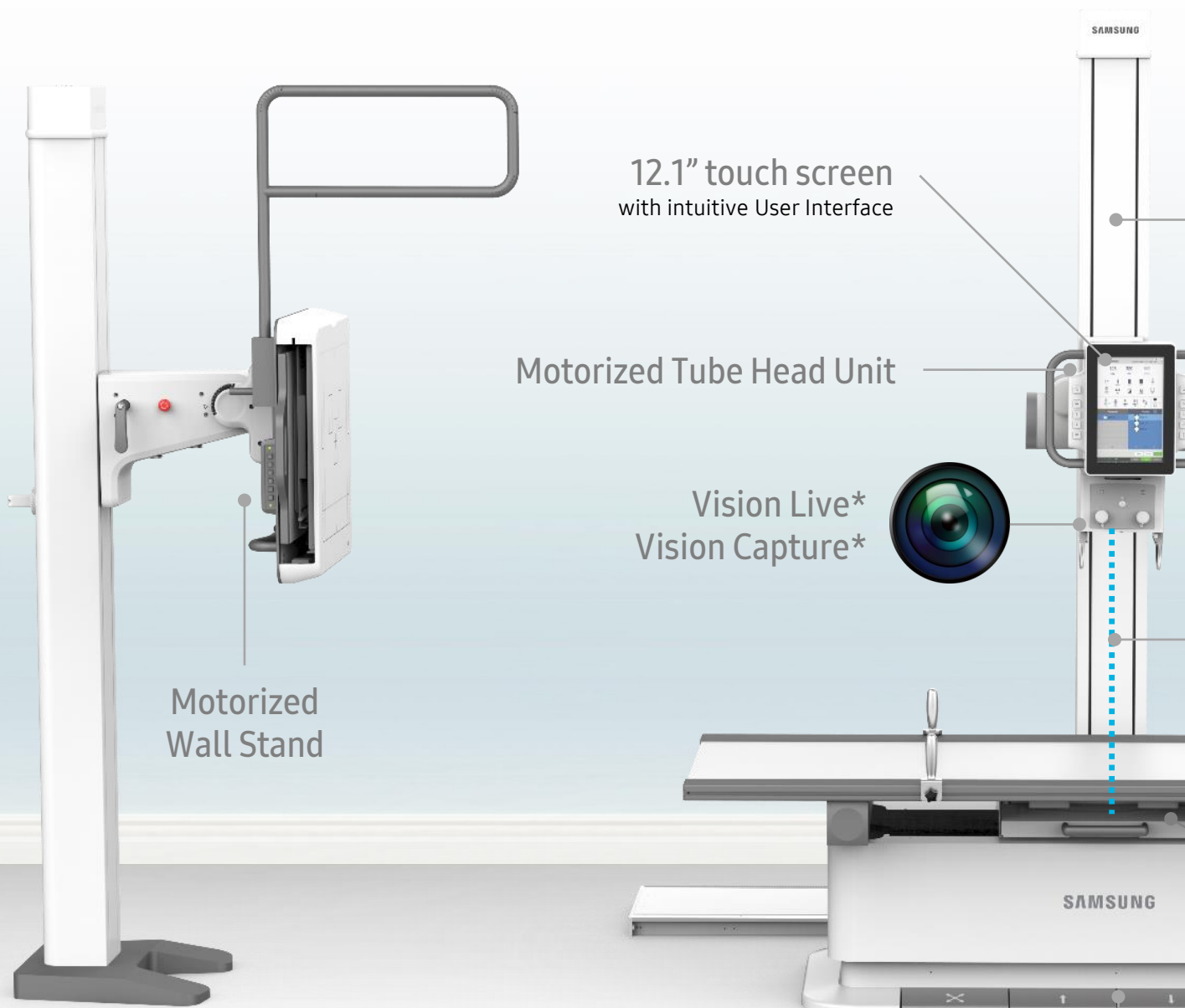
tion+



The all-new floor-mounted system is here.
It's ready to revolutionize your workflow.

STREAMLINE WITHOUT COMPROMISE

Automated System on a Small Footprint



12.1" touch screen
with intuitive User Interface

Motorized Tube Head Unit

Vision Live*
Vision Capture*

Motorized
Wall Stand

Motorized height a
in 6-way Ta

Auto-positioning

Easy Handling

Anti-collision Sensor

Auto-tracking*
Auto-centering*

Shared Bucky™

Adjustment
ble



Motorized
receptor titling*
to support precise
positioning



45° receptor
rotation*
for broad shoulders

Bucky Rotation
without removing and re-
installing the detector

In-bucky Charging
to charge detectors without
additional charger



Wall Stand



Table

Flexible Configuration



Wall Stand



Slim Stand



6-way Table



4-way Table

STREAMLINE WITHOUT COMPROMISE

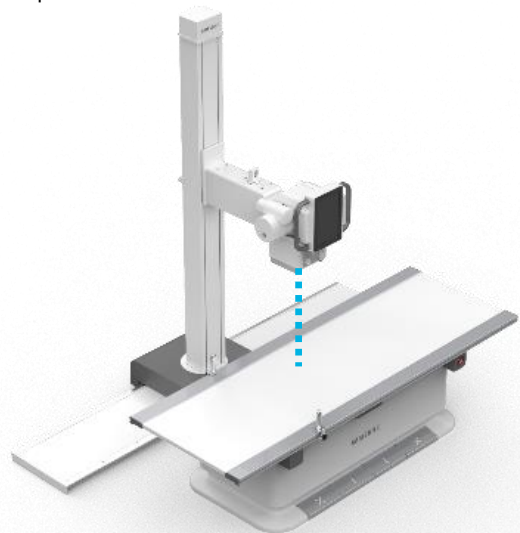
Auto-positioning

Auto-positioning allows the system to move to pre-programmed exam positions with a single click. This feature provides effortless control and simplifies daily routines.



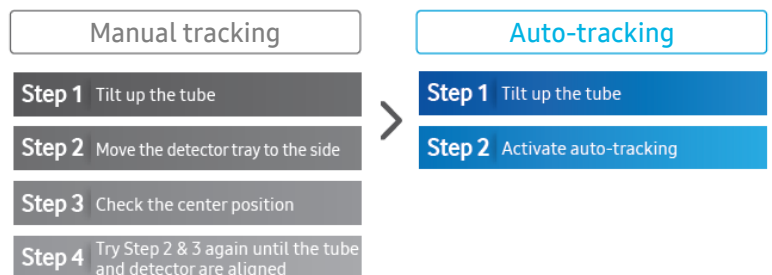
Auto-centering*

For a seamless workflow, Auto-centering automatically moves the tube head unit to aligns the X-ray focal spot with current center of the detector attached to the table or wall stand receptor.



Auto-tracking*

Auto-tracking automatically synchronizes the movement of the tube and detector to reduce repetitive tasks, resulting in less patient waiting time than the conventional manual tracking.



Shared Bucky™

Shared Bucky™ is designed for sharing two sizes of detectors in one bucky tray in the table. (F4335-AW, S4335-AW, S4343-AW)





Samsung's latest camera solution is focusing on new ways to increase the efficiency of DR imaging further. Vision Live allows continuous patient monitoring through the live camera in the tube head unit. It assists technicians to control quickly and accurately the positioning even in the control room.

Vision Stitching (Manual Planning)

Auto Stitching can improve comfort for patients who have difficulty standing for long periods of time for consecutive shots. It supports easy and accurate setting while viewing the patient on the workstation screen and automatically captures a full body image.



Vision Capture*

Vision Capture offers a companion patient picture of an X-ray image taken. It allows to send the captured picture to DICOM server to assist radiologists in understanding patients' status and exam situation better. (Face masking supported)



Exhaustive Quality Control

A lot of test categories are performed under test groups at stages of design, development, manufacture and shipment to find and analyze any defects that may affect the system. We conducts internal tests comparable to international test standards such as MIL-STD, ASTM, IEC, and etc.



Design inspection



Development inspection



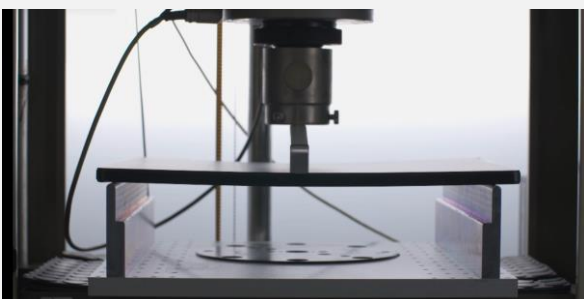
Manufacture inspection



Shipment inspection

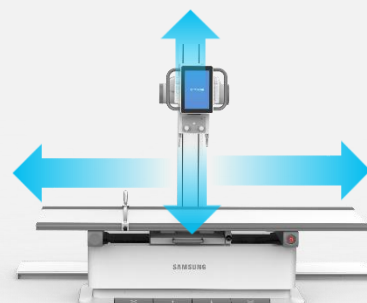
Reliability test

Samsung systems undergo strict reliability and durability tests to provide consistent imaging quality and performance.



Life span management

The use scenario targets a 10-year lifespan. The tests are divided into electronic and mechanical aspects to perform component stress assessment and operational endurance test carefully.



STREAMLINE WITHOUT COMPROMISE

27%
Lighter†



Glass-Free Detector

To offer more comfortable imaging experiences, Samsung introduces new flagship detector, AccE Glass-Free Detector. It is designed to relieve user's fatigue with lightweight by replacing a glass-based substrate with a non-glass flexible panel. This glass-free technology not only makes it 27% lighter†, but also does not compromise the image quality with high DQE (76% @0lp/mm).

Lightweight
approx. **2** kg‡
(4.5 lbs)



IP57

Reliable in Versatile Environment

Impressive load allowance along with dust and water resistance allows the detector to be actively implemented in versatile environments. Its robust design will help reduce user concerns when applying the detector in complex situations such as ER and OR.



400 kg
(881 lbs)
Surface load



200 kg
(441 lbs)
Point load¹⁾

† Compared to S4335-AW without battery set

‡ Measured without battery set

1) Based on 40 mm diameter disc at the center

Enhance Your Daily Workflow

User-centric design of the detector to support patient positioning and alleviate daily burdens.



CENTER ENGRAVING
to help position the patient



REAR GRIP
to support transportation

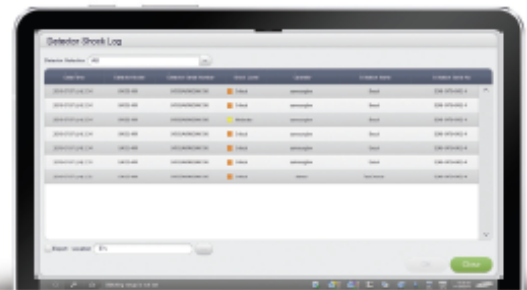


SIDE CHAMFER
to ease your lifting



Manage Your Detector Wisely

Continuous status tracking of the detector will upgrade user confidence and improve the system's uptime. Features such as real-time shock sensing and detector auto correction will allow the detector to be in shape for use and help you respond quickly to critical detector shocks.



Real-time Shock Sensing

Voice Guide*

For radiologic technologists, it can be a burden to repeat the same comments to each patient, such as breath in/hold, do not move, etc. Voice Guide helps to reduce user fatigue and improve work efficiency. With hand switch or hotkey (F1~F8), you can conveniently deliver pre-recorded comments and it also helps to alleviate language barriers with foreign-language speaking patients.



Virtual Remote Controller*

With an additional virtual controller, users can control the tube head unit or table through the screen in the control room. There is no need to spend time looking for a remote control, and it supports seamless workflow.



DIAGNOSTIC CONFIDENCE



S-Vue™

S-Vue™ image processing engine provides excellent, high resolution images for diagnostic accuracy and confidence. Its anatomy adaptive enhancing and noise reduction technologies offer outstanding sharpness and readability.



Consistent Image Quality
for all cases with all types



Enhanced Anatomical Clarity
for low dose condition

Case 1. Chest AP (X-Large adult)



The image was taken with GM85.

Case 2. Abdomen



These images were taken with GC85A.

Case 3. L-spine



Case 4. Pelvis (Halo artifact)



The image was taken with GC85A.

The upgraded S-Vue™ displays areas with varying bone density clearly regardless of the patient's size or body region through advanced region-specialized processing.



Low Dose in New S-Vue™

S-Vue™ not only provides excellence in image quality, but also secures better patient safety in radiography examinations. This can help change the patient's perspectives for X-ray radiation and improve patient satisfaction.



Our Pledge for Low Dose

Samsung's Low Dose campaign is going to change your ordinary X-ray experience into our low dose imaging experience. Our commitment to lower dose will help you give more care to the ones you love. We will accompany with you as a lifetime partner in the right way.

Case. Pediatric Chest PA¹

Images were taken with GM85.



15%
Dose Reduction



(54 kVp / 1.42 mAs / 0.06 dGy*cm² / 0.1 mmCu Filter)

(54 kVp / 1.21 mAs / 0.05 dGy*cm² / 0.1 mmCu Filter)

* Optional feature requiring additional purchase

Precise dose management features

Automatically optimized dose controls prevent excessive radiation exposure and provide precise dose control for patients.

- 6-stage Pediatric Exposure Management according to weight
- 3-stage Bariatric Exposure Management* (Large/X-Large/2X-Large)
- Automatic filter with APR
- Dose Report
- AEC



1) Note: The claim concerning Samsung DR is based on limited phantom and clinical study results. Only routine PA chest radiography and abdominal radiography for average adults and pediatric abdominal, chest, skull radiography were studied, excluding pediatric patients under 1 month old. (FDA cleared - K172229, K180543, K182183) In practice, the values of dose reduction may vary accordingly. These clinical images calculate the dose reduction rate from its own standard dose at the clinical site, unlike our FDA claim which compares dose between new IPE and old IPE. The clinical site is responsible for determining whether the particular radiographic imaging needs are not impacted by such x-ray dose reduction.

DIAGNOSTIC CONFIDENCE



SimGrid™*

With just a click, SimGrid™ allows you to provide better patient care with higher satisfaction and reduced retake rates without the use of a portable grid. It improves image contrast by reducing scatter radiation effects and creates better image quality. The 3-step intensity control (Low/Medium/High) enables customized image processing.

Case. Chest AP

Images were taken with GM85.



Without Grid



With SimGrid™



S-Enhance*

To support your diagnosis, S-Enhance improves the clarity of foreign bodies (e.g. tube, line and/or needle) in images of chest, abdomen, and L-spine. With a single on-screen click, the companion image is created without additional settings or x-ray exposure, streamlining the workflow.

Case. Chest AP

Images were taken with GM85.



Without S-Enhance



With S-Enhance

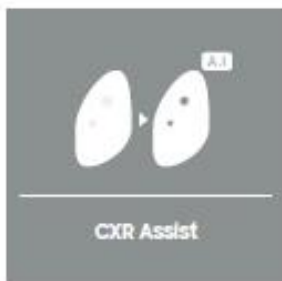
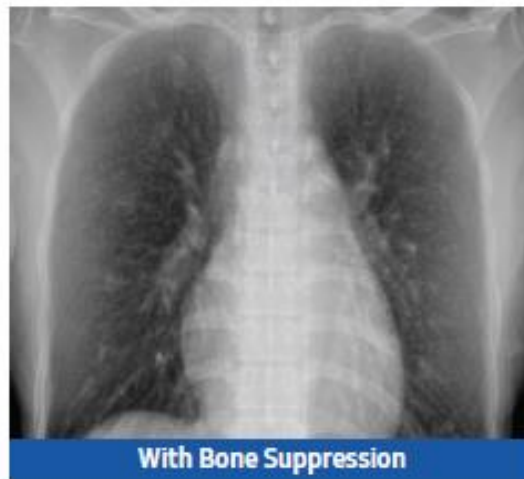


Bone Suppression*

Without additional setting or exposure, Bone Suppression Imaging improves the clarity of soft tissues by suppressing the appearance of bones in chest images, which improves your ability to detect nodules. You can easily create the companion image with just a click on the screen.

Case. Chest PA

Images were taken with GC85A.



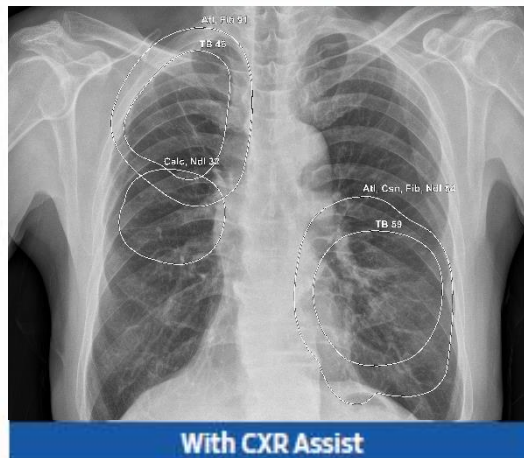
CXR Assist*

CXR Assist with Lunit INSIGHT CXR helps you diagnose more efficiently and accurately by automatically detecting 10 of most common thoracic radiologic findings and supporting Tuberculosis Screening.

10+ Nodule · Consolidation · Pneumothorax · Pleural Effusion · Atelectasis · Pneumoperitoneum · Cardiomegaly · Mediastinal Widening · Calcification · Fibrosis + Tuberculosis Screening

Case. Chest PA

Images were taken with GC85A.



EXPAND PREMIUM EXPERIENCE

Samsung Platform

Our reliability and stable services are the result of continuous upgrades based on extensive customer and feedback. Experience an integrated DR solution for efficient and successful hospital operations.

Intuitive UI/UX · SMART Center · S-Share™ ·
Cybersecurity · QAP · Value care service



Standardized management with SMART Center*

S-Share™

S-Share™ can dramatically increase efficiency through the use of AccE Glass-Free Detector and AccE Detector with various existing compatible equipment. It enables accelerating connection for better synergy with premium digital radiography systems.



Samsung DR Cybersecurity



Samsung's Defense-in-depth

- Designed holistic protection for your critical assets with multi-layered security controls: physical, operating system hardening, network, access control, application, and data layers

World-class Management System

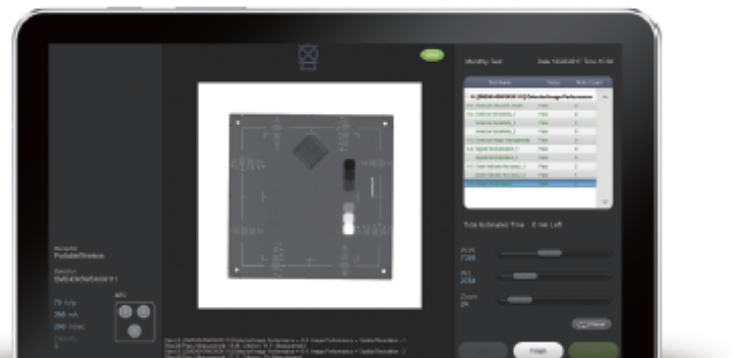
- Received independent certification including ISO/IEC27001, SO/IEC27701
- Comply with Risk Management Framework (RMF) according to NIST SP 800-53

Government-grade Security

- Achieved government agency security including Authority to Operate (ATO) for the U.S. Department of Defense

QAP*

QAP (Quality Assurance Program) assures consistent imaging performance in a precise and cost-effective way. It enables comprehensive system management by automatic periodic test measuring multiple parameters such as source performance, AEC accuracy, geometry accuracy, and detector performance with image quality.



Value care service



Remote Software Update

Keep the software up to date without service requests. The latest version of the software is notified for users to download and update.



Remote Maintenance System

This RMS continuously monitors any system errors and automatically identifies the system and software version.



24/7 call center

Our customer support center operates 24 hours per day, 365 days a year to quickly respond to any questions or problems you may have.



Service offering

Samsung provides tailored service and support programs to meet your unique requirements.

About Samsung Electronics Co., Ltd.

Samsung Electronics Co., Ltd. inspires the world and shapes the future with transformative ideas and technologies.

The company is redefining the worlds of TVs, smartphones, wearable devices, tablets, cameras, digital appliances, medical equipment, network systems, and semiconductor and LED solutions. For the latest news, please visit the Samsung Newsroom at news.samsung.com.

AccE GF85 Catalog v0.1-240909

GF85 is CE approval pending.



Scan code or visit
www.samsunghealthcare.com
to learn more

Copyright © 2024 Samsung Electronics Co. Ltd. All rights reserved. Samsung is a registered trademark of Samsung Electronics Co. Ltd. Specifications and designs are subject to change without notice. Non-metric weights and measurements are approximate. All data were deemed correct at time of creation. Samsung is not liable for errors or omissions. All brand, product, service names and logos are trademarks and/or registered trademarks of their respective owners and are hereby recognized and acknowledged. Samsung Electronics Co., Ltd.

129, Samsung-ro, Yeongtong-gu, Suwon-si, Gyeonggi-do, 16677, Republic of Korea

SAMSUNG